

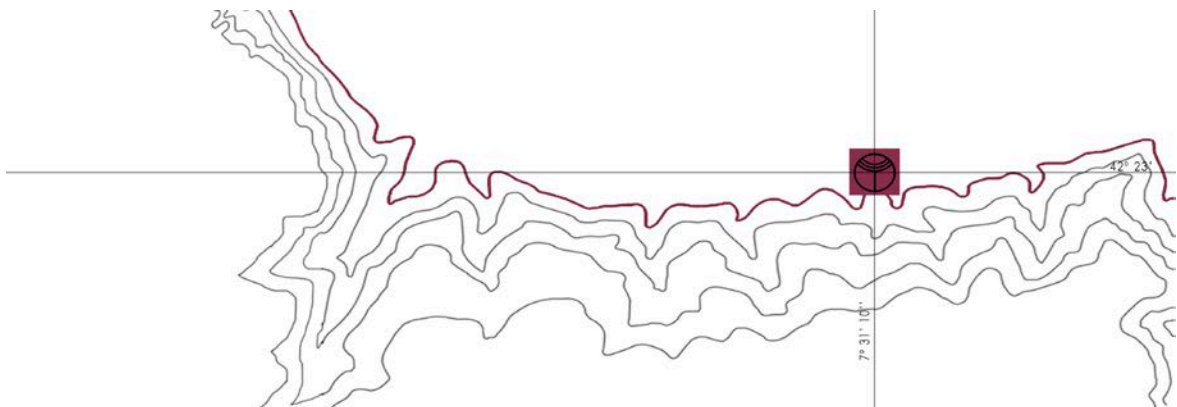


Ronsel do Sil
VITICULTURA HEROICA
D . O . R I B E I R A S A C R A



TECHNICAL SHEETS

Adega Ronsel do Sil





Ronse do Sil

VITICULTURA HEROICA

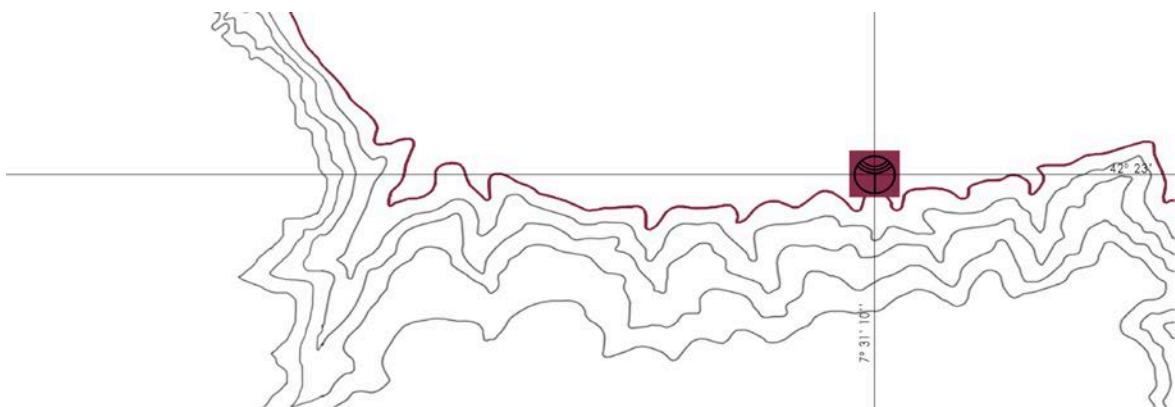
D . O . R I B E I R A S A C R A

vel' uveyra



VEL' UVEYRA GODELLO

| | |
|-------------------------------|---|
| Vintage | 2011 |
| Denominacion de Origen | Ribeira Sacra |
| Location | Sacardebois, A Teixeira |
| Varietal | Godello |
| Vines age | 10 - 50 years |
| Conduction System | 50 % grow tubes, 50 % espalier |
| Altitude | 300 - 450 meters |
| Annual Precipitation | 700 mm |
| Soil | Granitic |
| Exposure | East, West |
| Performance | 7500 Kg/ha |
| Harvest | 12 – 13 september. Manual harvest, in boxes of 15 kg |
| Total Production | 2.200 bottels (0.75 L) |
| Alcohol | 13,5 % VOL |
| Label | Vel' uveyra, which in the old Galician vernacular language means "gaze at the vineyard", represents the exuberant shades of the harvest. The symmetric disposition of the grapes in the picture expresses the rationality of the new strong philosophy of the winery to promote Sustainable Development, in the ancient landscape of the Ribeira Sacra. |





Ronseal do Sil

VITICULTURA HEROICA

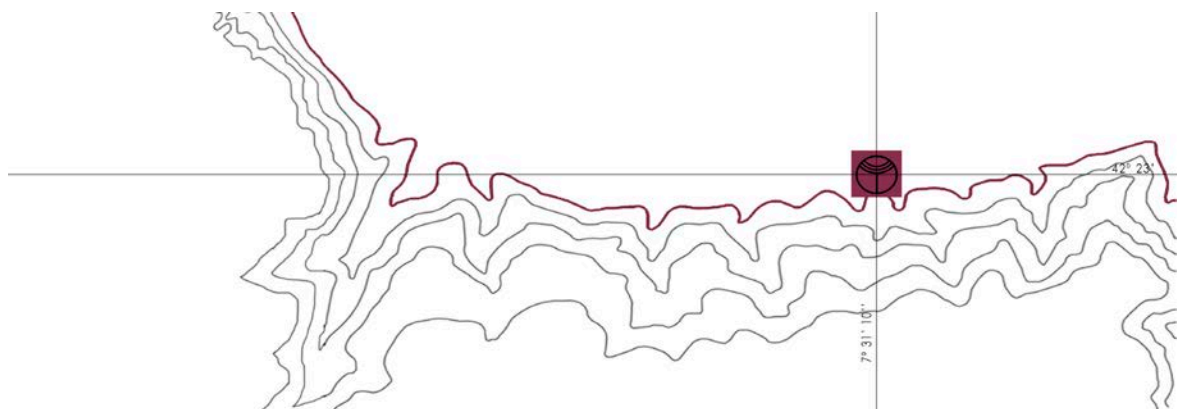
D . O . R I B E I R A S A C R A

vel'uveyra



VEL' UVEYRA MENCÍA

| | |
|-------------------------------|--|
| Vintage | 2011 |
| Denominacion de Origen | Ribeira Sacra |
| Location | Leiravella, Sacardebois, Barxacova |
| Varietal | Mencía |
| Vines age | 10 - 60 years |
| Conduction System | 65 % espalier, 35 % grow tubes |
| Altitude | 300 - 450 meters |
| Climate | Humid Mediterranean |
| Annual Precipitation | 700 mm |
| Soil | Granitic |
| Exposure | East, West |
| Performance | 6500 Kg/ha |
| Harvest | 17 - 24 september. Manual harvest, in boxes of 15 kg |
| Total Production | 9000 bottles (0.75 L) |
| Alcohol | 13,5 % VOL |
| Label | Vel'uveyra, which in the old Galician vernacular language means "gaze at the vineyard", represents the exuberant shades of the harvest. The symmetric disposition of the grapes in the picture expresses the strong philosophy of the winery to promote Sustainable Development. |





Ronse do Sil

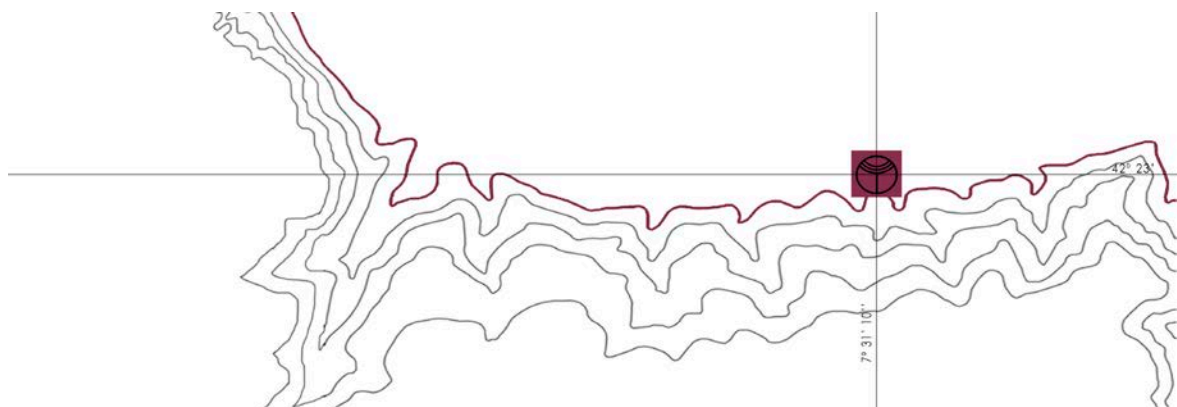
VITICULTURA HEROICA

D . O . R I B E I R A S A C R A



OURIVE

| | |
|-------------------------------|--|
| Vintage | 2011 |
| Denominacion de Origen | Ribeira Sacra |
| Varietal | Godello |
| Vines age | More than de 85 years |
| Conduction System | Grow tubes |
| Altitude | 550 meters |
| Annual Precipitation | 700 mm |
| Soil | Slate |
| Exposure | North |
| Performance | 5000 Kg/ha |
| Harvest | 800 bottles (0.75 L) |
| Total Production | 13,5% VOL |
| Label | Ourive means in Galician "metalsmith", artisan of gold and silver. The lines of the landscape where the vineyard and winery lies are reflected in the Sil river. |





Ronse do Sil

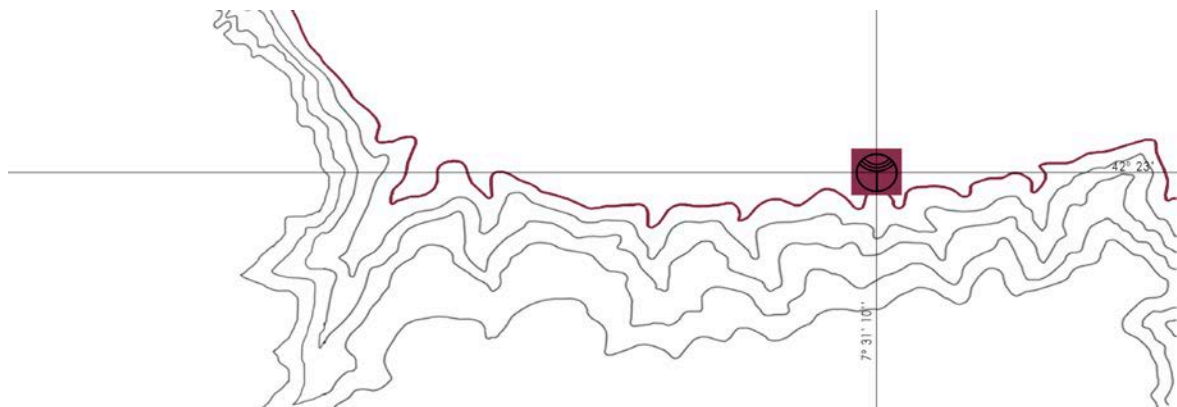
VITICULTURA HEROICA

D . O . R I B E I R A S A C R A



ARPEGIO

| | |
|-------------------------------|--|
| Vintage | 2011 |
| Denominacion de Origen | Ribeira Sacra |
| Varietal | Mencía |
| Conduction System | Grow tubes |
| Altitude | 550 meters |
| Annual Precipitation | 700 mm |
| Soil | Slate |
| Exposure | North |
| Performance | 4500 Kg/ha |
| Harvest | 23 september. Manual harvest, in boxes of 15 kg |
| Label | Arpegio is a harmonious composition, with well-tuned, violet chromatic hues and notes of fruit and minerals. The tonalities of the picture are in consonance with the micro-lots of the vineyard, arranged in the stave that represents the level lines of the stepped stone terraces, very characteristic of the Ribeira Sacra. |

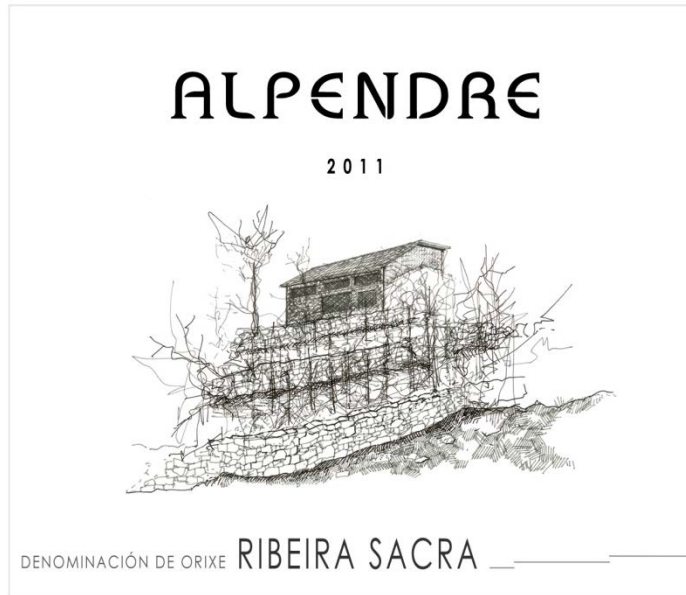




Ronseal do Sil

VITICULTURA HEROICA

D . O . R I B E I R A S A C R A



ALPENDRE

| | |
|-------------------------------|---|
| Denominacion de Origen | Ribeira Sacra |
| Varietal | Merenzao |
| Vines age | 17 years |
| Conduction System | Espalier |
| Altitude | 500 meters |
| Annual Precipitation | 700 mm |
| Soil | Granitic |
| Exposure | East |
| Performance | 5000 Kg/ha |
| Harvest | 27 september. Manual harvest, in boxes of 15 kg |
| Alcohol | 15% VOL |
| Label | Alpendre means in Spanish "portico" or "shed": humble native constructions made of wood and stone, where Galician rural cottages used to keep their farming implements. |

